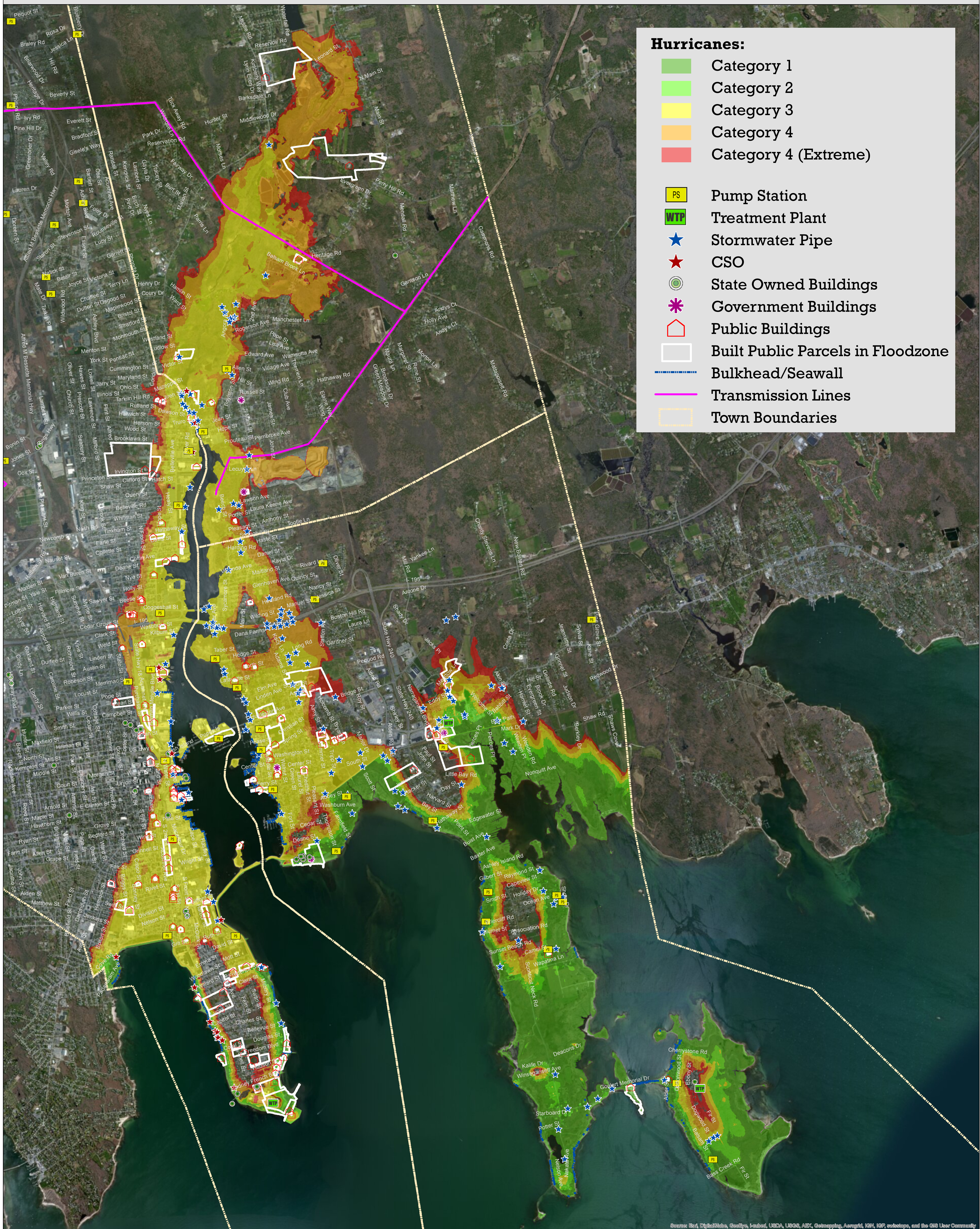


Hurricane Storm Surge: 2-Foot Sea Level Rise



The map and the modeled data products that are represented were created and compiled by SeaPlan and its project partners RPS ASA and Fuss & O'Neill for the Buzzards Bay National Estuary Program in support of a project entitled, "Climate Change Vulnerability Assessment and Adaptation Planning Study for Water Quality Infrastructure in New Bedford, Fairhaven, and Acushnet, Massachusetts". Data associated with storm surge extents was developed using NOAA's SLOSH model and infrastructure data was gathered from local and MassGIS databases. This map is a part of a series of four that display different sea level rise scenarios and associated storm surge inundation extents for five hurricane categories.

